



INDOFINE Chemical Company, Inc.

121 Stryker Lane, Bldg. 30, Suite 1 • Hillsborough, NJ 08844 • U.S.A.

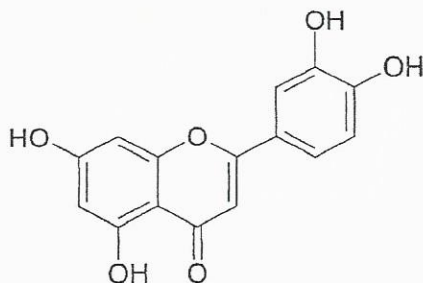
Phone: (908) 359-6778 • FAX: (908) 359-1179

website: www.indofinechemical.com

e-mail: chemical@indofinechemical.com

CERTIFICATE OF ANALYSIS

Catalog Number: L-101
Product Name: **LUTEOLIN**
(5,7,3',4'-Tetrahydroxyflavone)
Cas Number: [491-70-3]
Lot Number: 0511112
Chemical Formula: C₁₅H₁₀O₆
Molecular Weight: 286.25
Melting Point: >290°C
Appearance: Cream powder
Solubility: Soluble in DMSO
TLC: Chloroform:methanol (8:2)
NMR Spectrum: Enclosed (Confirms to the structure)
Storage: Store in a cool, dry place
Purity (HPLC): 99.27%





INDOFINE Chemical Company, Inc.

121 Stryker Lane, Bldg. 30, Suite 1 • Hillsborough, NJ 08844 • U.S.A.

Phone: (908) 359-6778 • FAX: (908) 359-1179

website: www.indofinechemical.com

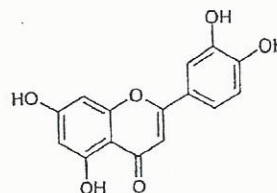
e-mail: chemical@indofinechemical.com

HPLC ANALYSIS

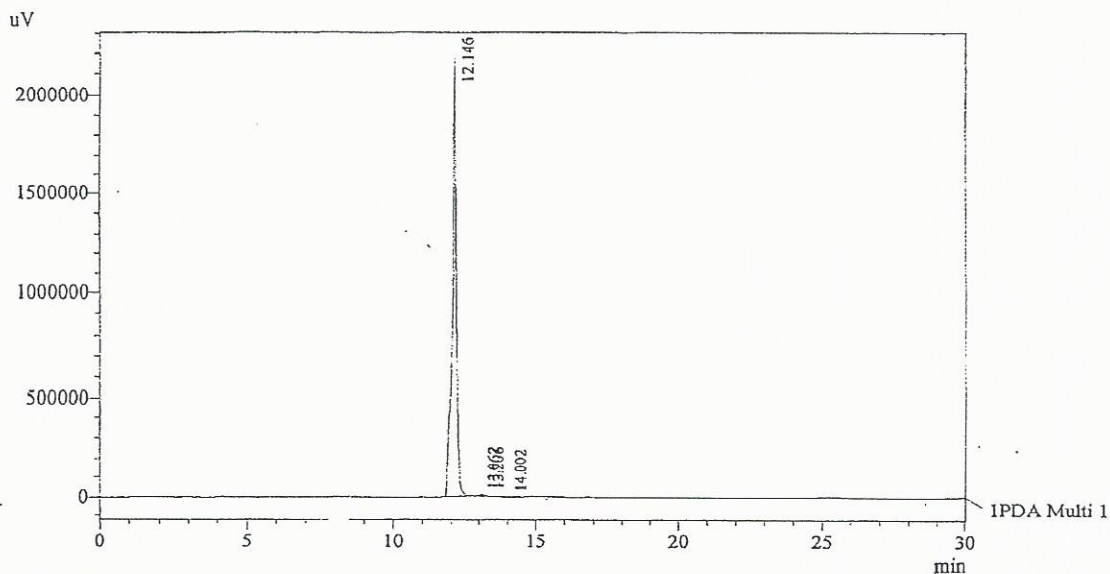
Acquired by : Sanjeev
Sample Name : Luteolin (5,7,3',4'-Tetrahydroxyflavone)
Sample ID : Lot No: 0511112
Injection Volume : 20 uL
Data Filename : 1405131.lcd
Method Filename : Linear Gradient.M.lcm

Catalog No.: L-101
Product name: Luteolin
Lot No.: 0511112

Column : LUNA C-18(2), (250mm x4.6mm 5.0μ)
Flow : 1.000 mL/min.
Mobile Phase : A(0.05% TFA in water) B(Acetonitrile)
0.01 90 10
12.0 10 90
20.0 10 90
23.0 90 10
30.0 90 10
Diluent : Methanol



Chromatogram



1 PDA Multi 1 / 254nm 4nm

PeakTable

PDA Ch1 254nm 4nm

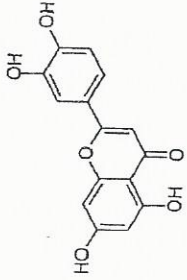
Peak#	Name	Ret. Time	Area	Area %	Relative Retention Time
1	Luteolin	12.146	21989225	99.27	1.00
2	RT:13.062	13.062	85776	0.39	1.08
3	RT:13.206	13.206	65073	0.29	1.09
4	RT:14.002	14.002	9950	0.04	1.15
Total			22150025	100.00	



INDOFINE Chemical Company, Inc.

121 STRYKER LANE
BLDG. 30, SUITE 1
HILLSBOROUGH, NJ 08844

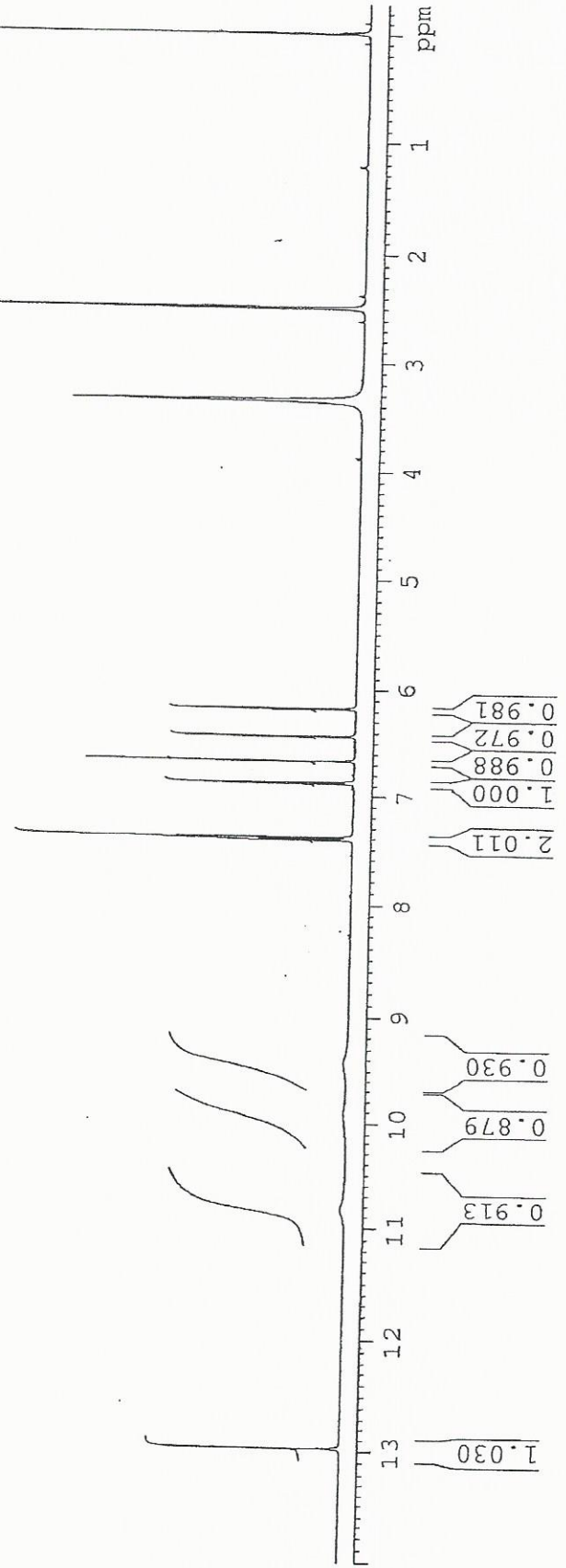
Catalog No.: L-101
Product name: Luteolin
Lot No.: 0511112



SOLVENT DMSO
NS 16
DS 0
SWH 9803.922 Hz
FIDRES 0.326819 Hz
AQ 1.5299480 sec
RG 40.3
DW 51.000 usec
DE 6.00 usec
TE 298.3 K
D1 1.50000000 sec
TD0 1

1H IN DMSO
AVANCE-600

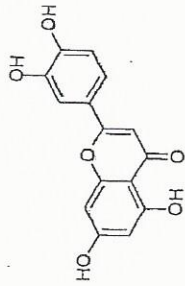
===== CHANNEL f1 =====
NUC1 1H
P1 7.50 usec
PL1 2.60 dB
PL1W 6.62584448 W
SFO1 600.3345228 MHz
SI 32768
SF 600.3300108 MHz
WDW EM
SSB 0
LB 0.30 Hz
GB 0
PC 1.00





INDOFINE Chemical Company, Inc.
121 STRYKER LANE
BLDG. 30, SUITE 1
HILLSBOROUGH, NJ 08844

Catalog No.: L-101
Product name: Luteolin
Lot No.: 05111412



SOLVENT DMSO
NS 16
DS 0
SWH 9803.922 Hz
FIDRES 0.326819 Hz
AQ 1.5299480 sec
RG 40.3
DH 51.000 usec
DE 6.00 usec
TE 298.3 K
D1 1.50000000 sec
TD0 1

1H IN DMSO
AVANCE-600

***** CHANNEL f1 *****
NUC1 1H
P1 7.50 usec
PL1 2.60 dB
PL1W 6.62584448 W
SF01 600.3345228 MHz
SI 32768
SF 600.3300108 MHz
WDW EM
SSB 0
LB 0.30 Hz
GB 0
PC 1.00

6.670

6.432
6.428

6.176
6.173

13.0 ppm

7.417
7.414
7.404
7.400
7.385
7.381

6.880
6.866

12.976

